



SCOIL NAOMH CÁRTHACH
BALLYFINANE N.S.
FIRIES
KILLARNEY
CO. KERRY
PHONE: 066-9764044

STARTING SCHOOL INFORMATION

CHARACTERISTIC SPIRIT

Scoil Naomh Cárthach is a Catholic primary school which strives to provide a structured, caring, happy and secure environment where the intellectual, spiritual, physical, moral and cultural needs of the pupils are identified and addressed.

While Scoil Naomh Cárthach is a school with a Catholic ethos, it also has due recognition for all other religions.

Scoil Naomh Cárthach seeks to provide a very high standard of Education to all of the pupils in the school in a friendly, welcoming, Catholic school environment.

The children of the school are encouraged to be responsible members of the school and local community.

Scoil Naomh Cárthach values all of the children in the school. The school recognises the fact that all children learn in different ways and have different abilities and talents that will be nurtured in the school.

The school will encourage the involvement of parents/guardians in their children's education through home/school contacts and through their involvement in the Parents' Association.

The school will endeavour to enhance the self-esteem of everyone in the school community, to imbue in the pupil's respect for people and property and to encourage in them the idea of being responsible.





Scoil Naomh Carthach is a two-teacher school including the Principal. There is also an SET teacher, two Special Needs Assistants and a part-time secretary. We aim to support pupils through a team approach to ensure that all children have access to additional supports in order to fully benefit from the primary school curriculum.

Catherine O'Shea

Ms. O'Sullivan

Ms. Doyle

Ms. O'Shea

**Linda
Tara**

Ms. O'Sullivan

Eimear



SCHOOL OPENING & CLOSING

The official school day starts at **8.50am**. Supervision is provided from **8.40am** onwards each morning. For health & safety reasons we advise that children are not dropped before this time. If your child is leaving school early, please inform your child's class teacher through the Aladdin app.

CLASSES START	: 8.50am
SOS	: 10.50 – 11.10am
LUNCH	: 12.30 – 12.50pm
CLASSES FINISH	: 13.30pm – (Infants) 14.30pm – (All other classes)



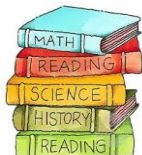
PUFFINS CHILDCARE

After school services are provided Monday to Friday by Puffins Childcare in Fries. Pupils are picked up from the school at Junior & Senior collection times by Puffins staff members. Pupils in the infant classes can be brought back down to the school for the senior collection and bus collection times. Early morning supervision and school drop off is also available from 8am on request from Puffins.



SCHOOL BUS

All children in the Ballyfinane National School catchment area can apply for the school bus. More details are available on this service from the school office.



SCHOOL BOOKS

In order to help keep school costs down for parents, Ballyfinane N.S. operates a book rental scheme. As announced in the budget 2022, the Department of Education will be providing free school books for all primary school pupils. More details to follow regarding this new initiative.

SCHOOL UNIFORM

The school uniform is to be worn by pupils on all school days unless parents are notified in advance of a change. On P.E. days, pupils should wear their school uniform and appropriate footwear.

The school uniform consists of;

- Ballyfinane N.S. Half Zip top
- Navy tracksuit/trousers bottoms or shorts/skirt/skort.
- White polo-shirt
- The half-zip is available to order from the school
- The rest of the uniform is generic and can be purchased individually by parents.



FACILITIES IN BALLYFINANE N.S.

- Two large Classes
- Playground
- Sensory Garden
- Large Playing Field
- Tennis/Basketball Court
- Playground
- SET Room
- Sensory Room
- Halla



SCHOOL ACTIVITIES

Sport

During the school year the following sports are taught by external teachers

- Football
- Hurling
- Yoga
- Creative Dance
- Zumba
- Gymnastics
- Swimming
- Irish Dancing
- Sensory / PE Circuit



Music

Traditional Irish music is deeply embedded in the history of Ballyfinane N.S. Our pupils in the Junior Room learn the tin-whistle while our senior classes can choose to either learn the guitar, fiddle or the bodhrán.



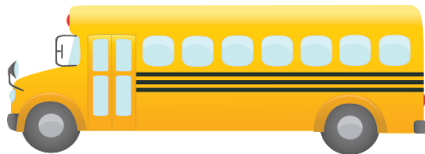
School Quizzes, Local Art & Writing Competitions

Here in Ballyfinane National School, we participate in a wide variety of quizzes, art & writing competitions and we are immensely proud of our winners in various art, writing, local history and quiz competitions over the years.



School Outings & Local History Tours

Throughout the school year we love to go on various outings & enjoy history tours of our local area. Some of our previous tours included the Gap of Dunloe, Glaneely, Monastery at Coolclieve, Killarney National Park & Kennedys Pet Farm.



Seasonal Activities

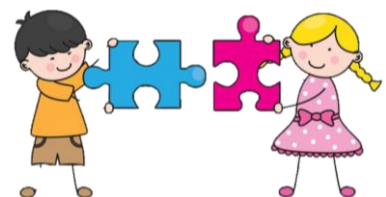
Our pupils engage in various fun activities to celebrate events throughout the year such as St. Patrick's Day, Easter, Halloween & Christmas. We are very proud of our in school displays and our annual Pumpkin Carving Competition, Santa at Christmas and the yearly visit from the Easter Bunny.

Other Activities

- Wellness Week
- Healthy Eating Week
- Friendship Week
- Science Week
- Active Schools Week

Other Initiatives

- Green School
- Digital School of Distinction
- Health Promoting School
- Blue Star Programme
- Active School
- Amber Flag



ABSENCES

Under the Education Welfare Act 2002 the school is obliged to inform the Education Welfare Officer of all absences exceeding 20 days during the academic year. Parents must inform the school through their Aladdin app if their child will be absent from school.

PUPILS LEAVING DURING SCHOOL TIME

Parents must notify the school through their Aladdin app if their child has to leave the school during school time and indicate whether they will be returning to school at a later time in the day.



ANTI-BULLYING

In Ballyfinane N.S. we strive to create a positive school climate, which focuses on respect for the individual, which encourages trust, caring, consideration and support for others. Pupils are encouraged to report incidents of bullying, and all reports will be noted, investigated and dealt with by the teachers. We are very proud of our friendly & welcoming school where we reward children for random acts of kindness & student of the week.

WELL-BEING

Here in Ballyfinane N.S. we place a major emphasis on adopting a Positive School Culture in order to enhance & foster the self-esteem and growth of all of our pupils. Pupils engage in a wide variety of wellness activities such as; yoga, mindfulness, nature walks, Wellbeing Week, Friendship Week & sensory activities.



CURRICULUM

The primary school curriculum is presented in seven primary areas, some of which are further subdivided into subjects.

These include

- Religious Education
- Language (Gaeilge and English)
- Mathematics
- Social, Environmental and Scientific Education (History, Geography & Science)
- Arts Education (Visual Arts, Music and Drama)
- Physical Education
- Social, Personal and Health Education - (SPHE)

HOMEWORK

Homework is assigned Monday to Thursday with the children being excused homework on weekends. If homework is not done a note to the teacher should be written in the homework diary.

Suggested timeframe for homework:

- | | | | |
|---|--|---|--|
| - | Infants: 0 - 20 mins | - | 3 rd & 4 th : 30 - 45 mins |
| - | 1 st & 2 nd : 20 - 30 mins | - | 5 th & 6 th : 45 - 60 mins |

HEALTHY LUNCHBOX

Ballyfinane N.S. was awarded the Health Promotion Flag in November 2019. As part of the Health Promoting Schools Programme, we encourage the children to become more aware of the need for healthy food in their lunch boxes.

Some recommended healthy options include;

- Wholewheat bread & wraps
- Wholewheat pasta
- Cheese & yoghurts
- Fruit
- Raw veggies
- Low sugar cereal bars

Foods that pupils are not allowed in school;

- Crisps
- Fizzy drinks
- Sweets
- Chocolate biscuits/bars
- Nuts (due to allergy & choking concerns)



COMMUNICATION

- An annual Parent / Teacher meeting takes place at the end of the first term
- Summer reports for each child are sent home in June
- The school newsletter is distributed to pupils at the beginning of each term
- **Aladdin Connect** is used to inform parents of any school closures, events & notices
- Parents are asked to **download the app** as soon as your child starts in the school

INFORMAL PARENT/TEACHER MEETINGS

Parents are welcome to speak to the Principal or class teacher before or after class time. In the case of appointments please contact the secretary in advance. Occasions occur where a parent needs to speak to a teacher urgently, the Principal will facilitate such meetings making every effort to ensure that the children in the class do not lose out on valuable learning time. If parents wish to drop in lunch boxes, sports gear etc. this can be done through the secretary's office.



COMPLAINTS PROCEDURE

Parents are asked to discuss their concerns with the class teacher initially and, if necessary to proceed further with the complaint, to contact the principal by making an appointment.

SCHOOL POLICIES

Copies of all the school's policies are available on request at the office and are on display in the corridor. When policies are due for renewal parents are asked to give their feedback on said policies via email.



DATA PROTECTION

The school is registered with the Data Protection Agency. All information is kept on file and will only be retained in the school for administrative purposes only. Parents can access information on their own child.

CHILD PROTECTION

The principal, Catherine O'Shea, is the Designated Liaison Person (DLP) in Scoil Naomh Cárthach and Moira O'Sullivan is the Deputy DLP. The principal is obliged to report any concerns regarding Child Protection to the HSE & to advise the B.O.M of the number of reports she made since the last B.O.M. meeting. The Board of Management is obliged to report any concerns in relation to child abuse to the Health Board in accordance with the Guidelines and Procedures issued to all school by DES. The Health Board will assess the case and put measures in place to provide the necessary supports for the child concerned.

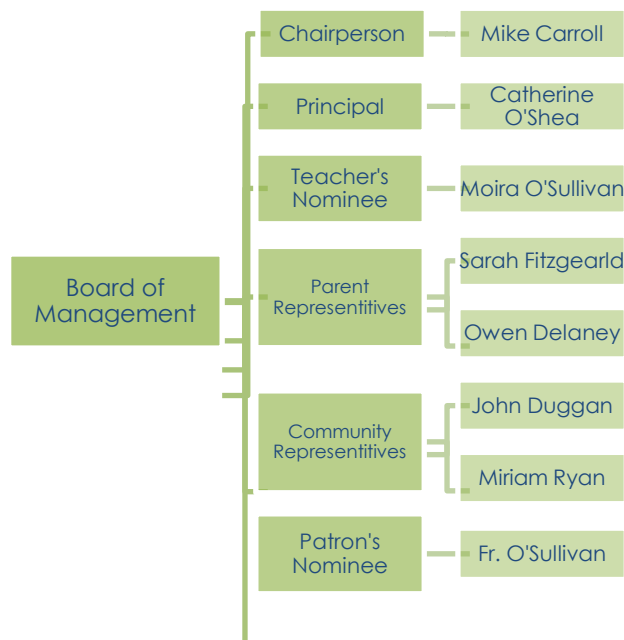
EMERGENCY CLOSING

Prior notice will be given to Parents regarding closure via the **Aladdin Connect** app. Every effort will be made to contact parents/guardians by telephone in the case of emergency closing. Please ensure all telephone numbers are updated regularly with the school secretary & please check that the school is open before leaving your child at school.

BOARD OF MANAGEMENT

The B.O.M has overall responsibility for the school, including finance, maintenance, staffing & the development of the school plan and policies.

The new Board of Management of Ballyfinane N.S was elected in December of 2019. The term of office is four years.



PARENTS ASSOCIATION

There is an active Parents Association in Scoil Naomh Carthach. Parents are informed of meeting times via the Aladdin Connect app. The P.A liaises regularly with the Principal and provides a forum to raise issues or concerns suggests & implements initiatives and also organises fundraising activities.

Some of the wonderful P.A. activities organised are the annual Tour de Ballyfinane, Quizzes, Coffee Morning, Children's Tour de Ballyfinane, Raffles and helping with the communion and Christmas celebrations.



We look forward to welcoming you and your family to Ballyfinane N.S.
We hope you have many happy years with us!

